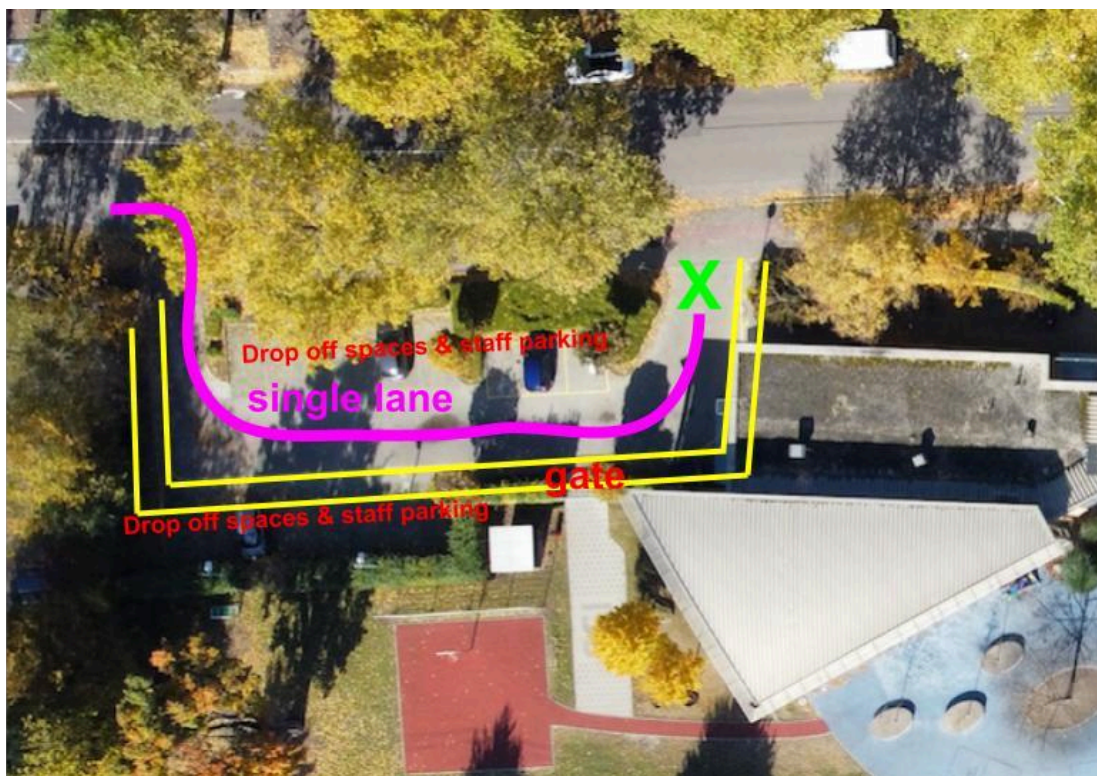


Introduction

The following guidelines have been developed to ensure that children and students at ISU stay as safe as possible. Thank you for taking a few moments to review these guidelines. Your cooperation helps ensure the safety and smooth flow of traffic around the school.

Lower School drop-off and pick-up zone



- This area is for **dropping off** students. If you need to assist younger children, please park in a dedicated space at either end of the building.
- This is a **single-lane** drop-off. Do not pass other vehicles, or exit your own.
- To reduce congestion, drive as far forward as possible within the drop-off zone-even if this means passing the entrance gate (i.e. to the **green cross**)
- Remember there are parking spaces at **both** ends of the school. Please use these spaces if you need more time to help your child or if you need to leave your vehicle.
- Walkers should enter through the **ISU gate by the parking lot** and follow the **pedestrian walkway** (yellow line) Cars must not cross the yellow line.

- Children may not be dropped off **before 8:00** unless they are enrolled in early morning care. They are not supervised and the area is not safe for children.
- Always have children exit on the **passenger side** to avoid oncoming traffic.

Main entrance

- It is illegal and unsafe to stop your vehicle in the traffic lane directly in front of the school. Please do not drop off or pick up your child here.
- The road in front of the MSUS entrance is not safe for crossing. Ensure your children use the marked pedestrian crossings to cross safely.



Cyclists and pedestrians

- Cyclists should dismount in the car park and use the pedestrian lane.
- If using either ISU parking lots, be aware of **people** on sidewalks near the entrance and exit as well as on the lined pedestrian walkway.
- Also note that there is a **cycle path** that runs the length of the school.
- Avoid waiting in the lower grade entrance with vehicles that block the pedestrian path. This creates a danger for children exiting the school.

Thank you for your support and cooperation in keeping the ISU community safe.

L. Osborne
26th March 2025